



Request for Quotation

For Concentrate and Tailing Thickeners

23 November 2011

Legend International Holdings Inc.

Level 8, 580 St Kilda Road
Melbourne, Vic 3004

Table of Contents

Confidentiality Statement.....	3
Submission Details	3
Submission Deadlines	3
Submission Delivery Address	3
Submission Questions and Clarifications	4
Electronic Submissions	4
Introduction and Executive Summary	4
Project Location	4
Business Overview & Background	6
Detailed Thickener Specifications	8
Assumptions & Constraints.....	8
Terms and Conditions.....	9
Selection Criteria	10

Confidentiality Statement

This document, and any attachments thereto, regardless of form or medium, is intended only for use by the addressee(s) and may contain legally privileged and/or confidential, copyrighted, trademarked, patented or otherwise restricted information viewable by the intended recipient only. If you are not the intended recipient of this document (or the person responsible for delivering this document to the intended recipient), you are hereby notified that any dissemination, distribution, printing or copying of this document, and any attachment thereto, is strictly prohibited and violation of this condition may infringe upon copyright, trademark, patent, or other laws protecting proprietary and, or, intellectual property. In no event shall this document be delivered to anyone other than the intended recipient or original sender and violation may be considered a breach of law fully punishable by various domestic and international courts. If you have received this document in error, please respond to the originator of this message or email him/her at the address below and permanently delete and/or shred the original and any copies and any electronic form this document, and any attachments thereto and do not disseminate further.

Thank you for your consideration, Legend International Holdings Inc.

Please respond to tonyc@axisc.com.au with any questions or concerns.

Where no notice is given, all information contained herein is Copyright 2011 Legend International Holdings Inc.

Submission Details

Submission Deadlines

All paper submissions for responding to this request for quotation must be delivered to our office, as stated below, no later than:

Friday, 23rd December, 2011
No later than 5:00pm EST

Submission Delivery Address

The delivery address to be used for all submissions is:

Dr Adam Teague
Metallurgy Manager
Legend International Holdings Inc.
Level 8, 580 St Kilda Road
Melbourne, Victoria 3004
Phone: +61 3 85322866
Email: adamt@axisc.com.au

Submission Questions and Clarifications

You may contact the following person if you have any questions or require clarification on any topics covered in this Request For Quotation:

Mark Lollback
Metallurgist
Phone: +61 3 85322866
Email: markl@axisc.com.au

Electronic Submissions

Electronic submissions in response to this Request for Proposal will be accepted as long as they meet the following criteria:

Sent via email to: adamt@axisc.com.au

Document standards:

- Must be in Microsoft Word 2003-97 format
- File name must end it ".doc"
- Must be sent encrypted to protect confidential information

Introduction and Executive Summary

Legend International Holdings Inc. (Legend) is a Delaware Corporation listed on the OTC Bulletin Board in the United States of America. Legend is working to develop and mine its phosphate deposits approximately 120km northwest of Mount Isa, Queensland, Australia at its Georgina Basin Phosphate Project. Legend has a phased implementation plan to become one of the world's leading suppliers of phosphate fertilizer. Legend intends to begin construction on the project during 2012 and be operational in 2013.

Legend intends to process an average 3.45 Mtpa of phosphate ore through a Beneficiation Plant to produce 1Mtpa of phosphate concentrate. Legend invites Suppliers to submit a response to this Request for Quotation for the supply of concentrate and tailing thickeners for their Beneficiation Plant. An overview of the project, Beneficiation Plant layout, specifications, assumptions and constraints, terms and conditions and selection criteria are outlined in this document.

Project Location

Figure 1 outlines the Paradise South Beneficiation Plant location, approximately 120km northwest of Mt Isa. Access is gained via M^cNamara Road, off the Barkly Highway. M^cNamara Road is a well maintained gravel road for 48 km that currently facilitates all types of vehicles including road trains up to the CST Lady Annie mine site. From the Lady Annie mine site to the Paradise South Beneficiation Plant, a

distance of 20 km, the M^cNamara Road is a dirt road which is currently used by power and water service vehicles. Legend expects this portion of the road to be upgraded to be able to facilitate a range of vehicles including trucks and road trains by the time construction is due to commence.

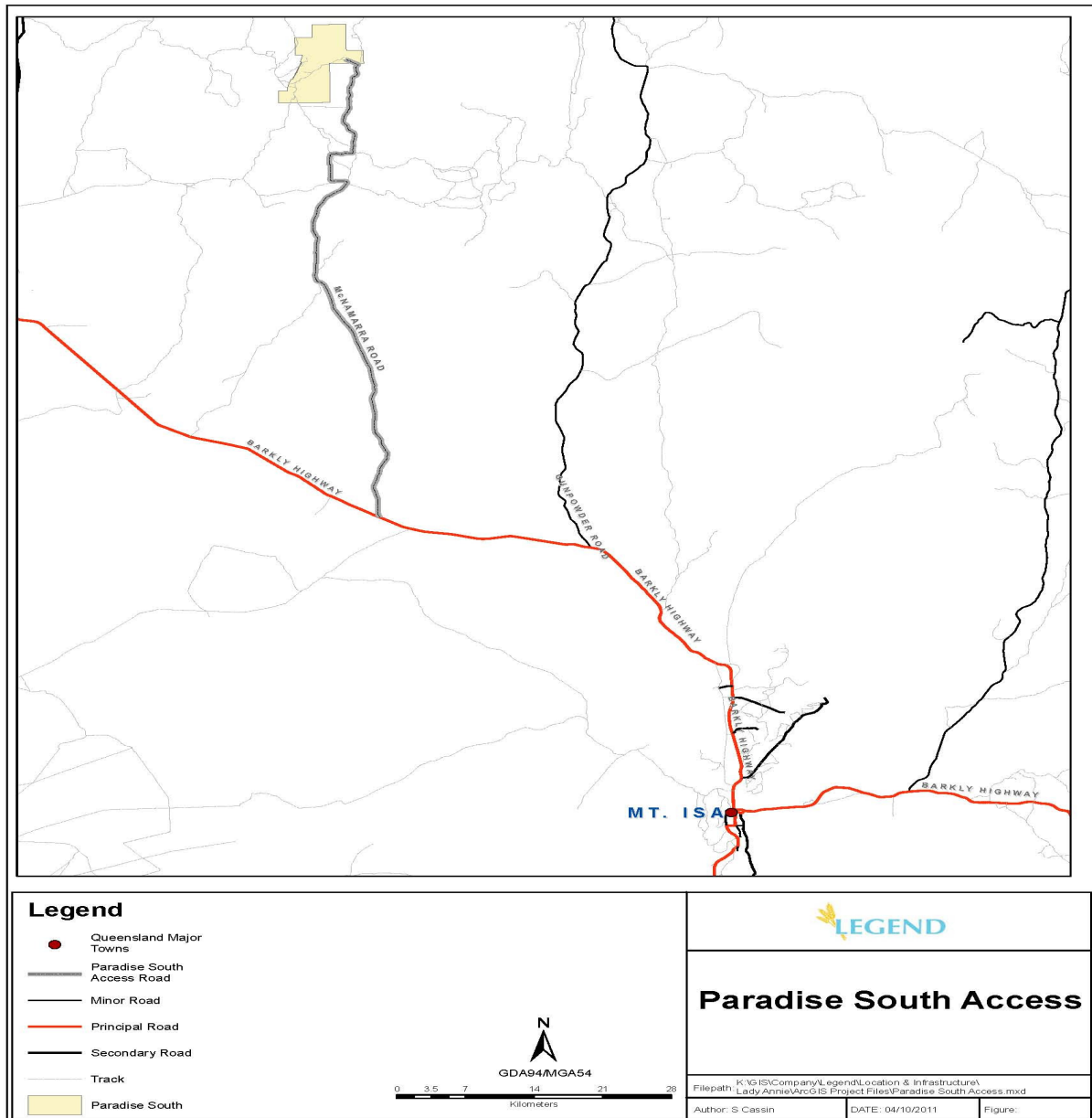


Figure 1. Location of Paradise South Beneficiation Plant.

Business Overview & Background

Legend plans to mine and beneficiate 3.45 Mtpa Run of Mine Ore (ROM) at the Paradise South deposit from an average grade of 15.5% P_2O_5 , producing 1Mtpa phosphate concentrate at a grade of 33% P_2O_5 via flotation. Through innovative techniques in flotation process technology, Legend has made advances in recovering ultrafine phosphate particles ($<20\ \mu\text{m}$) which has significantly increased the reserve size and reduced mining costs. This technology using reagent conditioning at high weight % solids, de-ionised water and Jameson flotation cells is currently under application for an international patent by Legend International Holdings. The process is designed to recover at least 80% P_2O_5 at a concentrate grade of 32% P_2O_5 or greater from ores with highly variable P_2O_5 feed grade and a particle size distribution of up to 80 wt% passing 20 μm . The diagram TP001 shows the approximate location of the concentrate and tailings thickeners with respect to the overall site layout. The beneficiation process involves tumbling the ROM ore in a rotary screen where the +25mm silica rich fraction is discarded and the -25mm fraction becomes the rod mill feed. After milling, the mill discharge is pumped to hydrocyclones where the cyclone overflow is filtered and becomes the feed for flotation. The cyclone underflow is returned back to the mill for regrinding. Flotation is carried out in three stages, rougher, scavenger and cleaner, where the cleaner concentrate is pumped to the concentrate thickener at a rate of 1Mtpa at a pulp density of approximately 25% solids. Bench scale and pilot plant test work undertaken by Legend have shown that this slurry can be thickened to at least 50% solids using Magnafloc 1011 before being pumped to the concentrate filters where it is filtered to at least 85% solids. The solids loading during the bench scale tests was 0.25 t/m²h. The scavenger flotation tailing is pumped to the tailing thickener at a rate of 1.95 Mtpa at approximately 25% solids. Test work has shown that this slurry can also be thickened to at least 45% solids before it is pumped to the tailings dam for further settling. The solids loading during the bench scale tests was 0.5 t/m²h.

Detailed Thickener Specifications

- Legend requires a concentrate thickener to increase the pulp density of the cleaner concentrate from 25% solids to a minimum of 50% solids with the aid of an appropriate flocculant at a rate of 1Mtpa. The concentrate has a specific gravity of 2.8 t/m³, an average P₈₀ of 150µm and contains a significant proportion of ultrafine (<20µm) particles, between 20 wt% and 80 wt% which can hinder settling.
- Legend requires a tailing thickener to increase the pulp density of the scavenger tailing from 25% solids to a minimum of 45% solids with the aid of an appropriate flocculant at a rate of 1.95Mtpa. The tailing has a specific gravity of 2.8 t/m³, an average P₈₀ of 150µm and contains a significant proportion of ultrafine (<20µm) particles, between 20 wt% and 80 wt% which can hinder settling.
- Legend is willing to consider all types of thickeners especially those suited to the settling of fine particles and those that the supplier may consider to be able to generate a higher pulp density in the underflow.

Please provide response for the thickeners using the following sub-headings as a guide:

- An overview of the Supplier's business.
- Technical specification sheet for the thickeners including type, weights, dimensions, power consumption, motor size, expected overflow and underflow flow rates and recommendations for pumps.
- Engineering drawings.
- Point of manufacture and summary of installation process.
- Detailed price summary for supply of thickeners to mine site.
- Lead time and schedule for manufacture and delivery to mine site.
- A summary of mine sites the thickeners have been supplied to previously.
- A summary of options for post-installation service and maintenance.

Assumptions & Constraints

Legend assume that the thickener test work carried out on Paradise South concentrate and tailing and the information that work provided is suitable for suppliers to specify the thickeners. Short listed suppliers will be invited to perform their own test work on concentrate and tailing samples to confirm specification if needed.

Terms and Conditions

Supplier Standards

As a minimum Legend requires our suppliers to maintain policies that support fair competition and integrity, require adherence to applicable laws, standards and regulations, and prohibit giving or receiving bribes, with a process for assuring compliance. The extension of personal gifts and gratuities by suppliers to Legend personnel and their families in a manner that could be interpreted as seeking preferential treatment is expressly prohibited.

Legend requires our suppliers to demonstrate strong organizational commitment to responsible health and safety management and the elimination of workplace injuries and illnesses, with a process for obtaining assurance on compliance with those policies, both internally and externally, by regular audits, reviews and reports. We value suppliers who actively manage and communicate product health and safety risks.

Suppliers must also demonstrate a strong organizational commitment to: responsible environmental management; the elimination of environmental incidents; waste minimization; responsible resource utilization; product stewardship; and greenhouse gas reduction. They must have a consistent record of compliance and remediation of damage caused by operations and incidents. We value a strong demonstrated organizational commitment to a precautionary approach to environmental challenges, promoting greater environmental responsibility and the development and diffusion of environmentally friendly technologies.

Legend has the expectation that all suppliers will:

- Be aligned with our business objectives (reducing costs, enhancing value, reducing and/or eliminating wastes, reducing variation, increasing operating or energy efficiency).
- Be financially secure.
- Be a direct manufacturer of goods, or an authorized agent/distributor thereof.
- Have technically capable and competent personnel to support the goods and/or services supplied.
- Maintain appropriate quality assurance systems and processes.
- Agree to supply on the basis of Legend's terms and conditions.
- Be able to transact business electronically, including internet compliance, purchase orders, invoices and payments in a form compatible with Legend.

Contract Terms

Contractual terms will include (but are not limited to):

Legend International Holdings Inc.
23 November 2011

CONFIDENTIAL

- Warranties by the Supplier as to performance standards of the Beneficiation Plant as outlined;
- Warranties by Legend as to rights over the construction site (e.g. Mining Lease and relevant regulatory authorizations);
- Bank Guarantees;
- Payment milestones and Retention monies;
- Indemnities regarding third party claims;
- Confidentiality and Intellectual Property;
- Insurance requirements;
- Delivery timetable, force majeure, liquidated damages for delay;
- Variation procedure;
- Passing of Title and risk;
- Termination rights;
- Dispute resolution.

Full terms and conditions of contract will be provided to short-listed Suppliers for discussion and negotiation.

Selection Criteria

Award will be made to those suppliers who meet Legend's business needs , standards and who make the best offers considering all relevant factors including health, safety, environment, quality, service, competitive pricing, technical ability and consistency. The following specific criteria will be used to assess the supplier's submission of concentrate and tailing thickener for Legend's Beneficiation Plant.

- Metallurgical Performance: The Supplier must be able to guarantee that the concentrate thickener can dewater the cleaner concentrate from a pulp density of 25% solids to a minimum of 50% solids with the aid of an appropriate flocculant at a rate of 1Mtpa. The tailing thickener must be able to dewater the scavenger tailing from a pulp density of 25% solids to a minimum of 45% solids with the aid of an appropriate flocculant at a rate of 1.95 Mtpa.
- Price: Legend will assess each submission using a cost comparison.
- Supply and Service: The beneficiation plant construction and commissioning schedule will be dependent on major equipment lead times. Legend will take into account lead time for supply

of the thickeners along with after sales service including maintenance and availability of ancillary equipment.